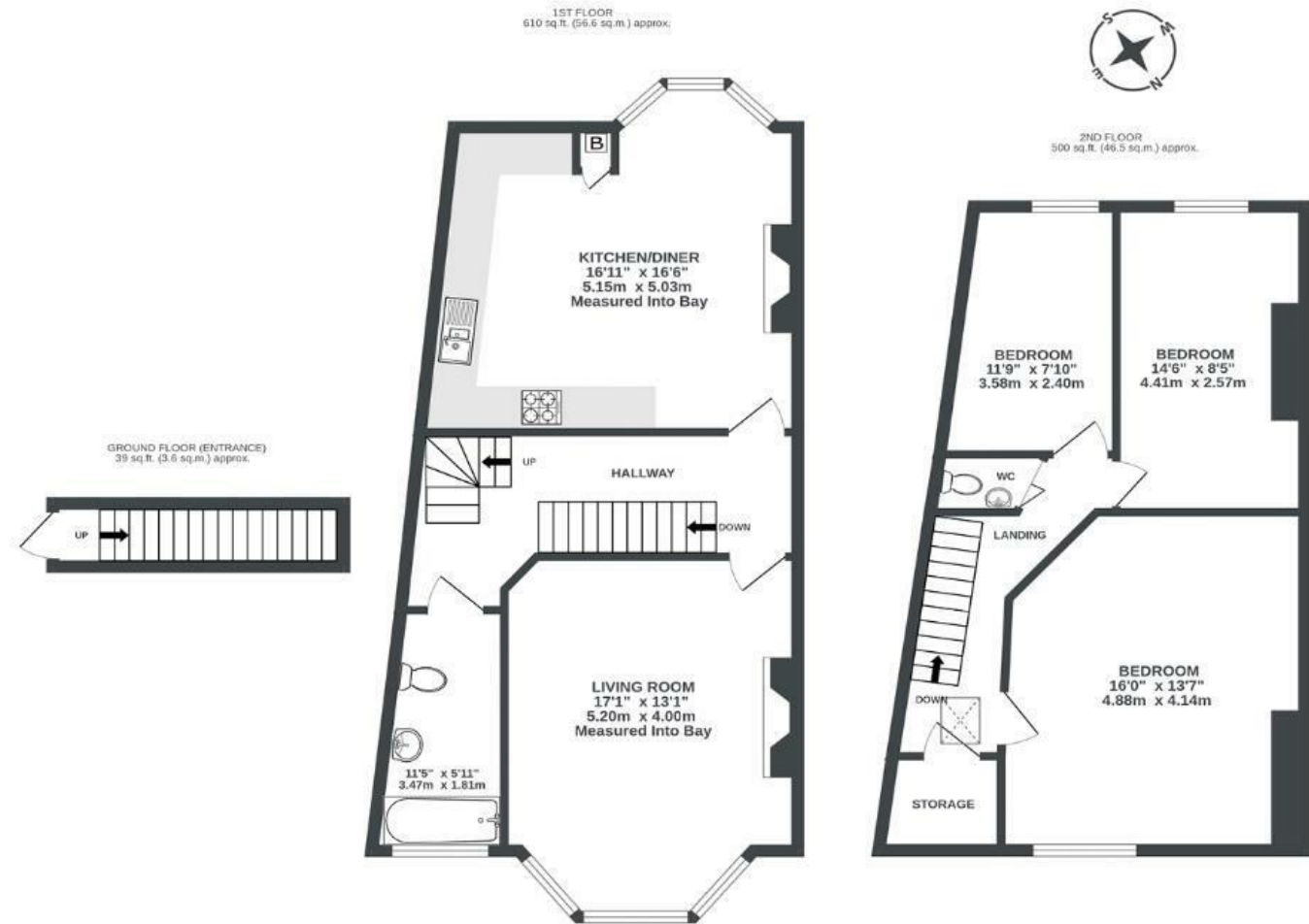


Elton Road

BISHOPSTON

APPROXIMATE FLOOR AREA
106.7 SQM / 1149 SQFT



Illustrations are for reference purposes only, measurements are approximate, not to scale.

Boardwalk

Elton Road

BISHOPSTON, BRISTOL

£

£395,000

zzz

3 Bedrooms



Bristol, BS7
8DD



2 Bathrooms

"The home has beautiful windows and I particularly love the bay windows at the front of the house which lets in so much light. I had to have extra long curtains made to fit them. Our first meal was fish and chips on makeshift chairs in the kitchen and I still remember the evening light coming in before watching the sunset over the garden below through the kitchen window. Gloucester Road is a two minute walk from the flat and offers independent coffee shops, bars, unique delis, selling the best olives, and an array of takeaways for every night of the week."

